



TRANE® ENERGY PERFORMANCE

Get a clear picture of building performance — and drive measurable results

Trane Energy Performance is a cloud-based building energy management system (BEMS) service designed to uncover energy waste in every corner of your building. By pairing our advanced technology with the extensive expertise of Trane building professionals, we can help you make smarter, cost-effective decisions about the way you manage and maintain your building.

Building energy data is aggregated using powerful visualizations and robust analytics that uncover hidden savings opportunities. Then ongoing assessments by Trane energy engineers provide energy conservation measure (ECM) recommendations to continuously improve energy performance.

Real-time energy monitoring helps to drive down energy costs by discerning where and when energy is being used, 24/7. Spot anomalies, prioritize building equipment issues and implement schedule changes based on budgetary impact.

Advanced analytics let you easily track metrics and make decisions based on that information. With state-of-the-art tools and deep industry knowledge from Trane energy professionals, graphically visualize energy usage or demand over a select period — information that can help you reduce energy spending.

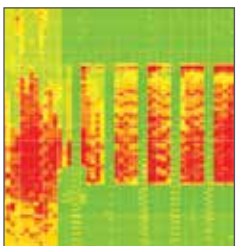
Robust energy baselines paired with ongoing analysis of building energy metrics help sustain gains and uncover more actionable information, even after improvements are made. You can verify the impact of changes and track ECM progress. Automated best and worst performer scorecards allow you to prioritize improvement measures for maximum impact.

Ongoing assessment and advisory services with Trane building professionals help keep your building on track, for continuous improvement. Trane energy professionals collect and analyze data and provide a historical record of energy performance, to help validate positive impacts on your building.



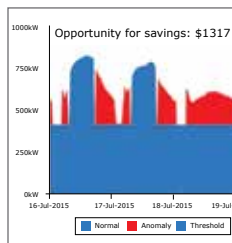
GET CLARITY

Harness the array of building data sources to bring clarity to your operations and see the potential for energy savings.



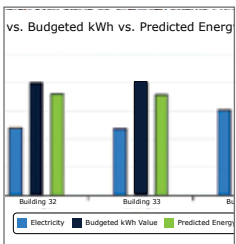
Spectral Analysis

- At a glance, sift through months of real-time meter data acquired over a 24/7 schedule.
- Graphically visualize energy usage or demand over a select period.



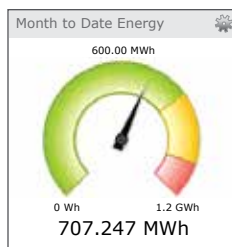
Energy Analytics

- Identify excessive off-hours energy consumption, to find instances of improperly scheduled equipment.
- Rein in excessive demand charges with peak demand analysis charts.
- Detect excess energy consumption to prioritize energy savings opportunities.



Tracking and Reporting

- Get reports specific to your goals and metrics based on a wide range of key performance indicators (KPIs) that are meaningful to your business outcomes.
- Set and track energy budgets.
- Make targeted decisions regarding building systems, and proactively manage your building with support and expertise from Trane.



Flexible Dashboards

- Intuitive user dashboards let you monitor building performance and view progress on sustainability goals.
- Dashboards can be tailored to your needs, for a clear picture of building energy performance.
- 24/7 energy monitoring from anywhere with a Web-based suite of applications.

Energy Performance is part of the Trane Intelligent Services portfolio, which helps you manage your facility for optimum energy efficiency, reliability and occupant satisfaction. With this collection of energy management services and solutions, you can assess and monitor building performance, with ongoing support and consultation from experienced Trane building professionals.



Scan the code, visit Trane.com/IntSvcExp or contact your Trane building professional.



ingersollrand.com

Ingersoll Rand (NYSE:IR) advances the quality of life by creating comfortable, sustainable and efficient environments. Our people and our family of brands—including Club Car®, Ingersoll Rand®, Thermo King® and Trane®—work together to enhance the quality and comfort of air in homes and buildings; transport and protect food and perishables; and increase industrial productivity and efficiency. We are a \$12 billion global business committed to a world of sustainable progress and enduring results.